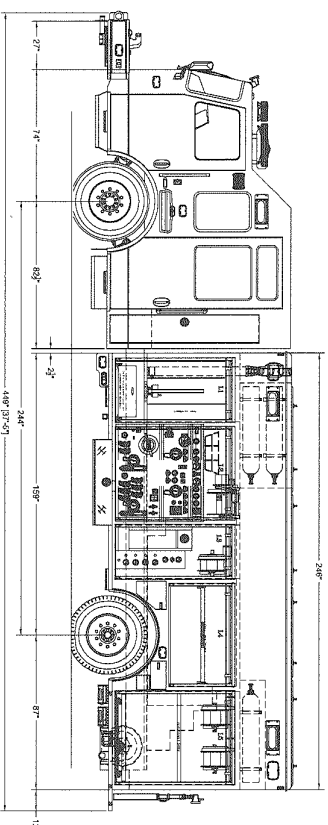
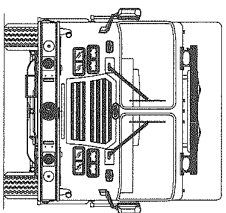
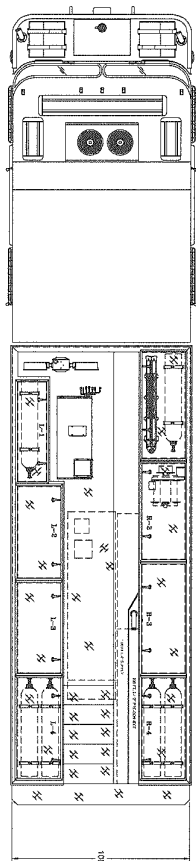
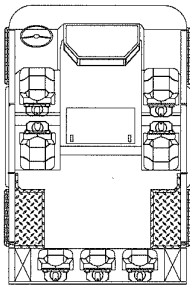


SEE NOTE 11
 125 1/2" HIG. 4" CUSHION
 125 1/2" HIG. 4" CUSHION
 125 1/2" HIG. 4" CUSHION



COMPARTMENT INTERIOR DIMENSIONS

1/2H	70	38-1/8	1/8	27/16
2/2H	70	34-1/8	1/8	29/16
3/2H	70	32	1/8	29
4/2H	38-3/4	28-1/2	1/8	29
5/2H	70	28-1/2	1/8	29
6/2H	70	28-1/2	1/8	29

COMPARTMENT DOOR DIMENSIONS

1/2H	66	36	ROLL-UP
2/2H	66	32	ROLL-UP
3/2H	66	32	ROLL-UP
4/2H	38.8	32	ROLL-UP
5/2H	66	32	ROLL-UP
6/2H	66	32	ROLL-UP

CHASSIS: KME PREDATOR
 CAB: PREDATOR XHD 22" RR
 BODY: KME PREDATOR XHD 22" RR
 BODY CO.: KME PREDATOR XHD 22" RR
 GENERATOR: ONAN 200W HYDRAULIC
 PUMP: HALE BPC 2000 GPM
 TANK: 500 GALLONS
 FOAM: 25 GALLONS

THIS DRAWING IS A GENERAL REPRESENTATION AND MAY NOT BE USED FOR CONTRACTUAL REQUIREMENTS. CONTRACTUAL REQUIREMENTS SHALL PREVAIL OVER DRAWING.

CUSTOMER APPROVAL:

NAME: _____
 TITLE: _____
 DATE: _____

REV PER BODY RELEASE
 1/28/14
 REV PER PRE CONSTRUCTION
 10/2/13
 REVISION DESCRIPTION
 SALES ENGINEER: CASH TAYLOR



INDUSTRIAL AND COMMERCIAL EQUIPMENT DIVISION
 KME CUSTOM HEAVY RESCUE
 MAGNOLIA, NJ
 GSO #9336