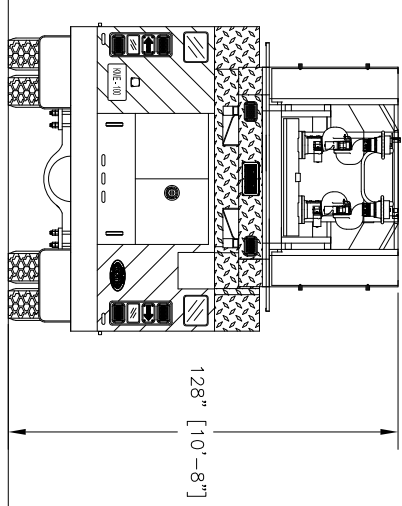
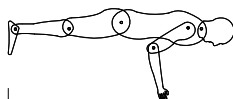
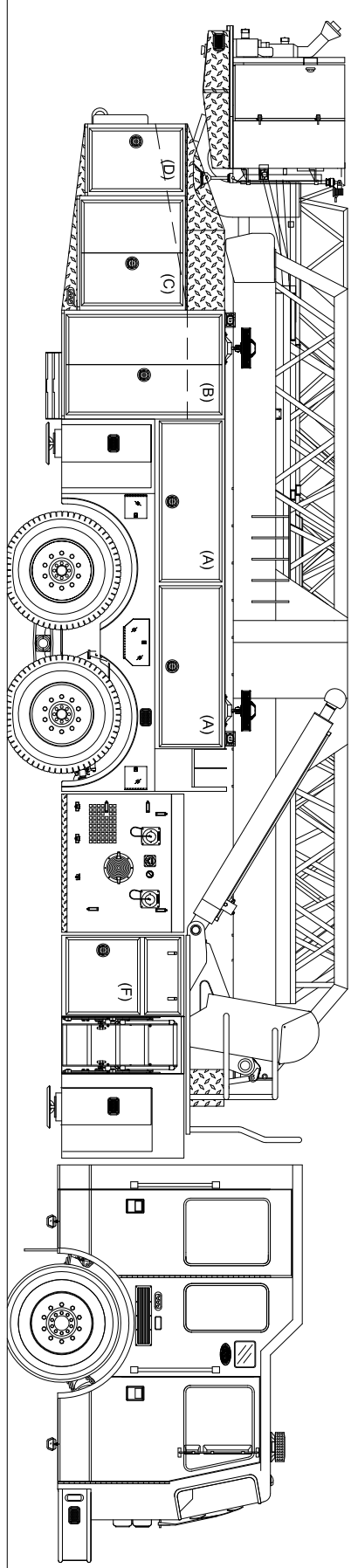


13'
12'-6"
12'
11'-6"
11'
10'-6"
10'
9'-6"
9'
8'-6"
8'
7'-6"
7'
6'-6"
6'
5'-6"
5'
4'-6"
4'
3'-6"
3'
2'-6"
2'
1'-6"
1'
APPROX. HEIGHT
0'



REAR VIEW

128" [10'-8"]



OFFICERS SIDE VIEW

SPECIFICATIONS

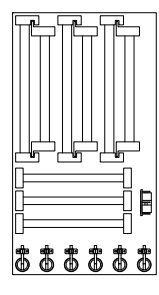
CHASSIS: PREDATOR X-MFD w/ 12" RAISED ROOF
 ENGINE: CUMMINS ISM 500 HP w/ ENGINE BRAKE
 TRANSMISSION: ALLISON 4000EVS 5-SPEED AUTOMATIC
 FRONT AXLE: MERITOR MF3-20-133A-N; 22,500 LBS
 REAR AXLE: MERITOR RT-58-185; 58,000 LBS
 PUMP: WATEROUS S100, 2000 GPM SINGLE STAGE
 TANK: 300 GALLON POLYME

COMPARTMENT SIZE

Location	Door Opening (Width) x Height	Internal Compartment Size (Width) x Depth	Volume (Cubic Feet)
(A)	21" x 59"	24" x 62"	12.1
(B)	36-1/2" x 35"	39" x 31"	24.3
(C)	36-1/2" x 31"	36-1/2" x 27"	14.4
(D)	36-1/2" x 40"	36-1/2" x 48"	14.4
(E)	36-1/2" x 40"	36-1/2" x 28"	44.6
(F)	25" x 64-5/8"	27" x 30-1/2" x 24"	11.4
Total Volume			172.3

GROUND LADDERS

- 2 - DUO SAFETY 35' 2-SECTION; 1200-A
- 1 - DUO SAFETY 28' 2-SECTION; 1200-A
- 1 - DUO SAFETY 20' ROOF w/ FOLDING HOOKS; 875-A
- 1 - DUO SAFETY 18' ROOF w/ FOLDING HOOKS; 875-A
- 1 - DUO SAFETY 16' ROOF w/ FOLDING HOOKS; 875-A
- 1 - DUO SAFETY 10' FOLDING; 585-A

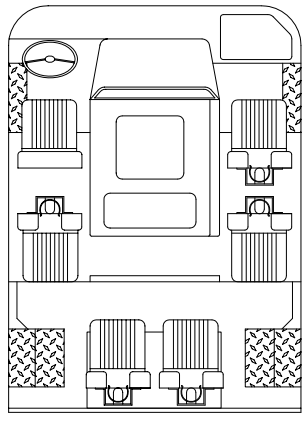


DISCHARGES

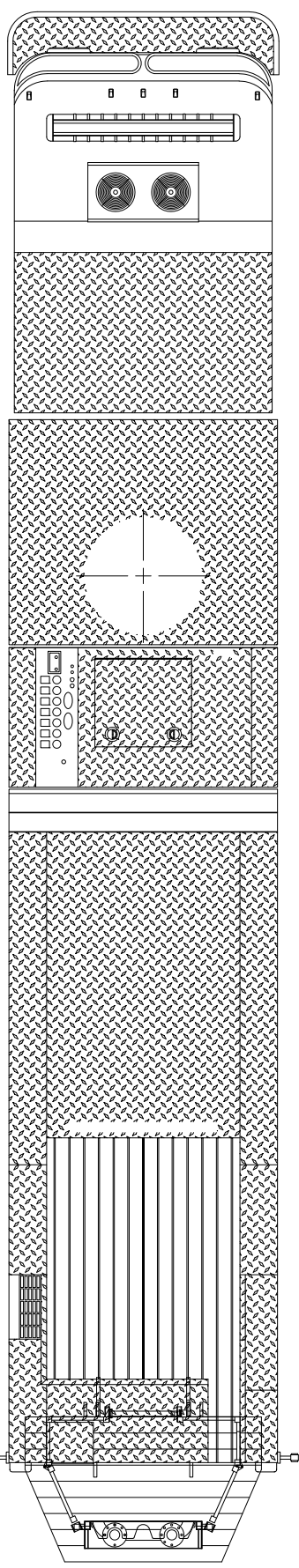
- 2 - 2-1/2" LEFT SIDE
- 2 - 2-1/2" RIGHT SIDE
- 1 - 3" RIGHT SIDE
- 1 - 4" AERIAL
- 2 - 1-3/4" CROSSLAY

NOTES

- RAYDAN AL-600 AIR RIDE SUSPENSION
- CAB EXTERIOR GRAB RAILS KNURLED ALUMINUM TYPE
- POLISHED ALUMINUM WHEELS
- COLE HERSE BATTERY JUMPER STUDS, LH SIDE
- STAINLESS STEEL PUMP PLUMBING
- PUMP PANELS 14 GA. BRUSHED STAINLESS STEEL
- 14" X 108" LADDER SIGN BOARD
- 6" NFPA WHITE SCOTCHLITE STRIPE WITH FOLD
- AMOR LUMA BAR TRACK MTD. COMPARTMENT LIGHTS
- 10K ONAN PTO GENERATOR

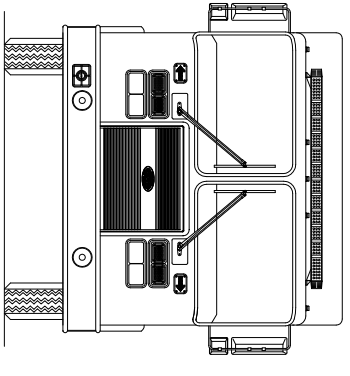


REAR VIEW OF CAB

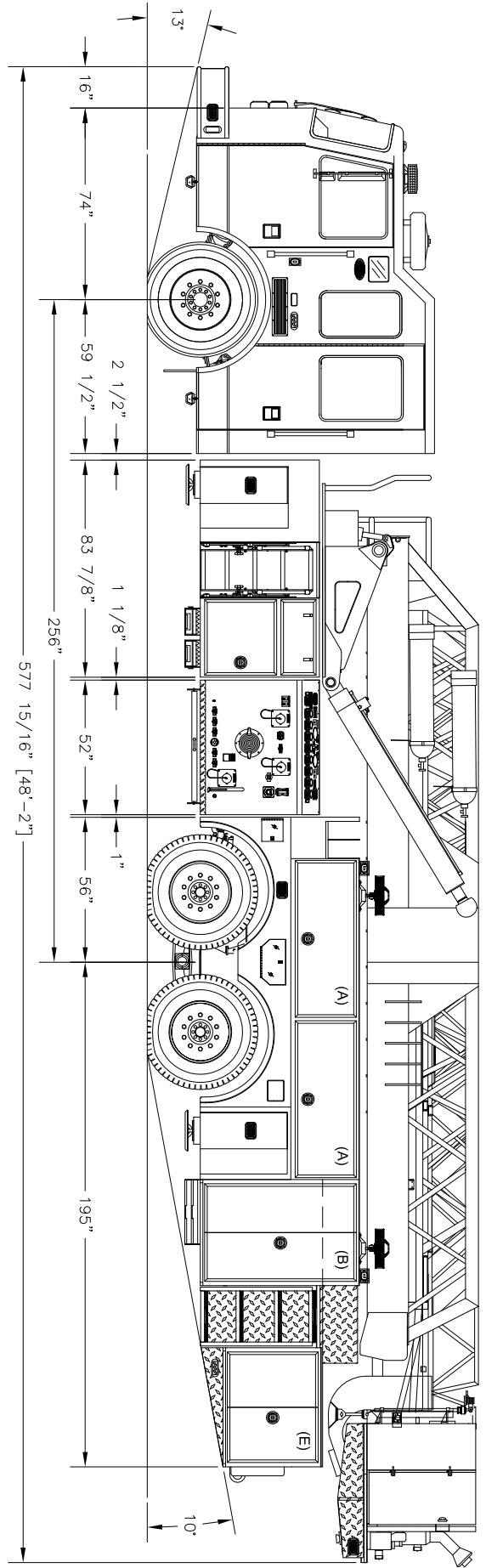


TOP VIEW

CAB INTERIOR LAYOUT



FRONT VIEW



DRIVERS SIDE VIEW

THIS DRAWING IS A GENERAL CONFIGURATION AND MAY NOT NECESSARILY REFLECT ALL CONTRACTUAL OBLIGATIONS. PLEASE REVIEW AND RETURN A SIGNED COPY.

NAME: _____
 TITLE: _____
 DATE: _____

CUSTOMER PAINT CODES

LOWER CAB AND BODY: PPG RED 71528
 CAB TWO TONE: PPG WHITE 8000
 LADDER: PPG WHITE 8000

COMPARTMENT INTERIOR: ZOLATONE 20-63

REVISION DESCRIPTION

SALES ENGINEER : JASON BEHLER

DATE: _____

APPROVED: _____

KME FIRE APPARATUS

ONE INDUSTRIAL COMPLEX
 NESQUEHONING, PA 18240

SCALE: NONE

100' AERIALCAT MIDMOUNT PLATFORM
 128" TRAVEL HEIGHT, 256" WHEELBASE

DEMONSTRATION UNIT

GSO 7362

DO NOT CHANGE MANUALLY