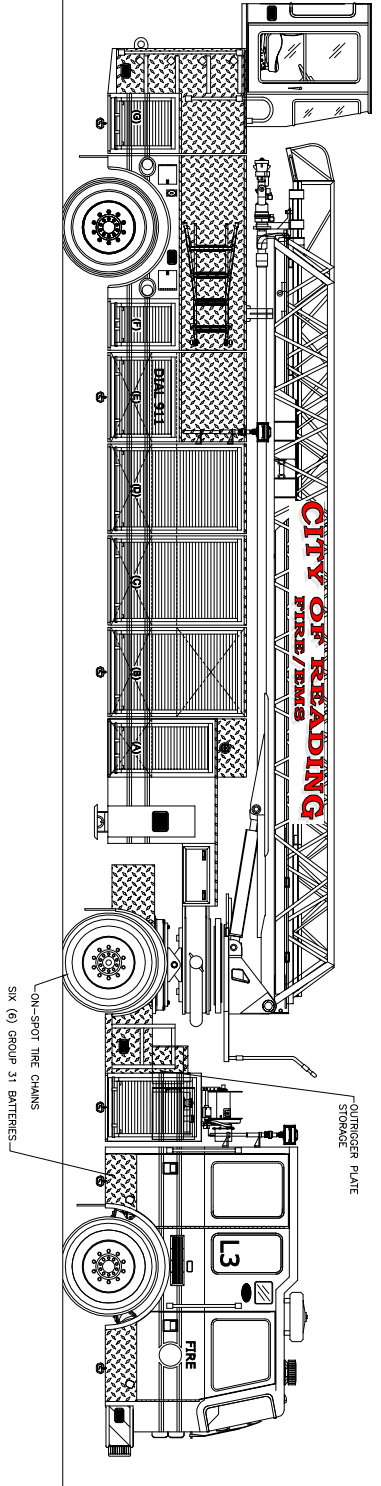
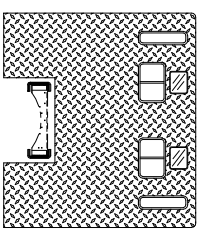


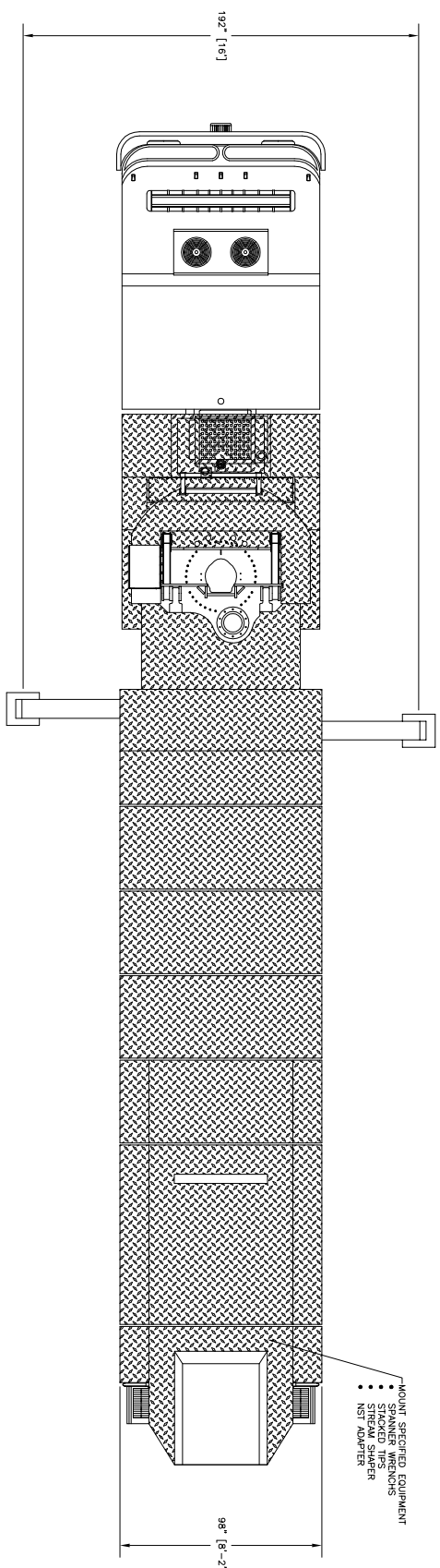
REAR VIEW



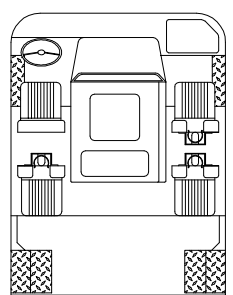
OFFICERS SIDE VIEW



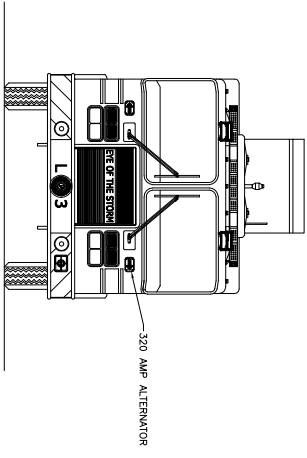
REAR VIEW OF CAB



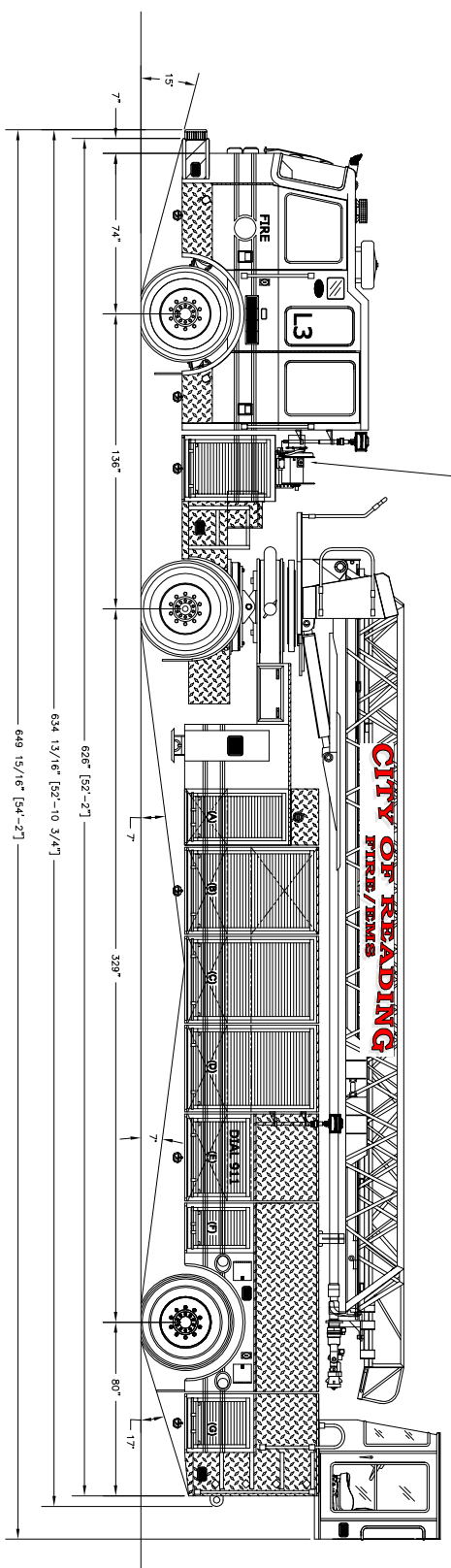
TOP VIEW



CAB INTERIOR LAYOUT



FRONT VIEW



DRIVERS SIDE VIEW

**SPECIFICATIONS**

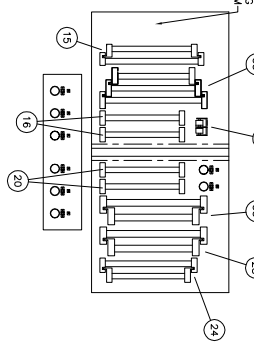
CHASSIS: PREDATOR MFD w/ 6" RAISED ROOF  
 ENGINE: CUMMINS ISM 500 HP w/ ENGINE BRAKE  
 TRANSMISSION: ALLISON 4000EVS AUTOMATIC  
 FRONT AXLE: MERRILL MFS-20-1334-N, 20,000 LB.  
 REAR AXLE: MERRILL MFS-20-1334-N, 20,000 LB.  
 TRAILER AXLE: MERRILL FL-943, 22,000 LB.

**COMPARTMENT SIZE**

LITERS	COMPARTMENT SIZE	LOWER TANKAGE CAP*	UPPER TANKAGE CAP†	BOOK OPENING
A	248 X 414 X 242	248 X 154 X 582	248 X 154 X 582	228 X 534
B	408 X 5126 X 210	388 X 154 X 4370	388 X 2824 X 4370	388 X 534
C	408 X 5126 (2420) X 270 (1240)	388 X 154 X 4370	208 X 2824 X 2740	388 X 534
D	408 X 5126 (2420) X 270 (1240)	388 X 154 X 4370	388 X 154 X 4370	388 X 534
E	408 X 2104 (2420) X 270 (1240)	388 X 154 X 4370	388 X 2420	388 X 2420
F	248 X 384 (2420) X 270 (1240)	248 X 154 X 4370	248 X 2420	248 X 2420

**GROUND LADDERS**

- 1 - D10-SAFETY 35' 3-SECTION
- 1 - D10-SAFETY 35' 2-SECTION
- 1 - D10-SAFETY 28' 2-SECTION
- 1 - D10-SAFETY 24' 2-SECTION
- 1 - D10-SAFETY 24' 1-SECTION
- 2 - D10-SAFETY 20' ROOF w/ FOLDING HOOKS
- 1 - D10-SAFETY 20' ROOF w/ FOLDING HOOKS
- 1 - D10-SAFETY 15' COMBINATION EXTENSION
- 1 - D10-SAFETY 10' ATTIC FOLDING



**NOTES**

- EXHAUST OUTLET ON DRIVERS SIDE
- PLYMOUTH TAILPIPE ADAPTER
- DIAL FUEL FILL POCKETS

THIS DRAWING IS A GENERAL CONVEYANCE AND MAY NOT  
 REPRESENT EXACT ALL CONSTRUCTION DIMENSIONS.  
 PLEASE REVIEW AND RETURN A SIGNED COPY.

NAME: \_\_\_\_\_  
 TITLE: \_\_\_\_\_  
 DATE: \_\_\_\_\_

**CUSTOMER PAINT CODES**

LOWER CAB AND BODY: PPG RED #70094  
 CAB TWO TONE: PPG WHITE #2185  
 LADDER: PPG WHITE #2185

COMPARTMENT INTERIOR: ZOLAONE 20-63

REV	DATE	REVISION DESCRIPTION	APP'D
B	22JAN08	ADDED HYDRAULIC TANK	JJB
A	16APR08	PRE CONSTRUCTION MEETING	JJB

SALES ENGINEER : JASON BEHLER

**KME FIRE APPARATUS**

ONE INDUSTRIAL COMPLEX  
 NESQUEHONING, PA 18240  
 DRAWN BY: JJB  
 APPROVED BY: PPH

100' AERIALCAT TRACTOR DRAWN AERIAL  
 138" TRAVEL HEIGHT  
 CITY OF READING  
 GSO #7242

DO NOT CHANGE MANUALLY